



CRCI²NA
CANCER & IMMUNOLOGY

CRCI²NA

CANCER & IMMUNOLOGY SYMPOSIUM

20 - 22 MARCH 2024 • NANTES

*Scientific
Program*

GENERAL ORGANISATION

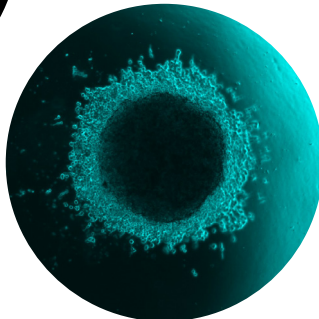
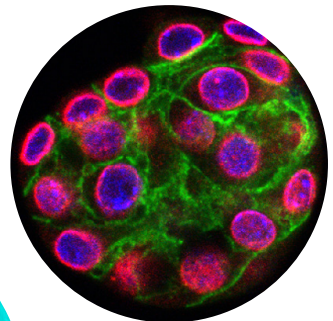
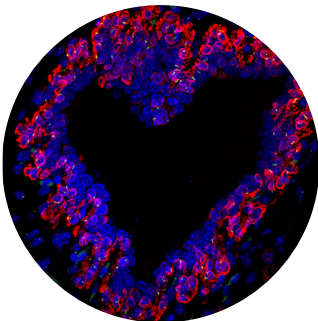
ATouT.Com Agency - crci2na@atoutcom.com - www.atoutcom.com



CIRCI²NA 2024 symposium: From normal tissues to cancer ecosystems

CIRCI²NA, the leading cancer research center in the west of France, is organizing its inaugural symposium. This event will gather international experts in cancer biology. The goal of this meeting is to discuss mechanisms driving cellular heterogeneity, plasticity and signaling in normal and cancer cellular ecosystems, which contribute to cancer development, progression and therapeutic resistance. The most recent development in cancer immunotherapy and innovative anti-tumor strategies will also be discussed during the meeting. World renowned speakers will share their most recent research, unveiling new therapeutic vulnerabilities to defeat cancer. This engaging conference will be hosted in the vibrant and picturesque city of Nantes.

The organizing committee



WEDNESDAY, MARCH 20TH

4:00 p.m. Participants welcoming - Registration & Coffee

5:00 p.m. Opening remarks

5:15 p.m. Keynote lecture:

Chairs: Vincent Guen & Philippe P. Juin

Epithelial-mesenchymal plasticity and metastatic dormancy

Robert A. Weinberg, *Whitehead Institute, MIT, USA*

6:15 p.m. Welcoming Cocktail

8:00 p.m. Youngster Networking Event





THURSDAY, MARCH 21ST

Session I - Mapping cellular heterogeneity and plasticity in normal tissues and cancers

Chairs: Claire Pecqueur & Yanis Mace

- 8:30 a.m.** **Participants welcoming**
- 9:00 a.m.** **Epigenetic and microenvironment drivers in multiples myeloma**
Felipe Prósper, *Universidad de Navarra, Spain*
- 9:30 a.m.** **Integrated genomic analysis refines molecular classifications of hepatocellular carcinoma based on LICA-FR cohort of 529 samples**
Long Pan, *Cordeliers Research Center, France*
- 9:45 a.m.** **EMTaTF demonstrate specific expression patterns in invasive breast cancer subtypes, correlated with proliferation status and bad prognosis**
Pierre Savagner, *Gustave Roussy, France*
- 10:00 a.m.** **Understanding the complexity of triple negative breast cancer metastasis and its microenvironment**
Eloïse Grasset, *CRCI²NA, France*
- 10:25 a.m.** **Confocal everywhere !**
 Benoît Binctin, *Regional Microscopy Sales Engineer, Andor, An Oxford Instruments Company*
- 10:30 a.m.** **Coffee break with partners**



THURSDAY, MARCH 21ST

Session I - Mapping cellular heterogeneity and plasticity in normal tissues and cancers

Chairs: Claire Pecqueur & Yanis Mace

- 11:00 a.m.** **The primary cilium orchestrates pregnancy-associated mammary gland remodeling by regulating cell fate decisions in the mammary epithelium**
Aurore Dupuy, CRCI²NA, France
- 11:15 a.m.** **Lineage plasticity of mammary epithelial cells: from homeostasis to tumor Initiation**
Shuheng Lin, CRCM, France
- 11:30 a.m.** **The metabolic cross-talk between T cells and tumor cells in the tumor microenvironment**
Ilaria Elia, KU Leuven, Belgium
- 12:00 p.m.** **Poster session 1 in Hall Pharma & Lunch break with partners**





THURSDAY, MARCH 21ST

Session II - Signaling in normal and cancer cellular ecosystems

Chairs: Julie Gavard & Eloïse Grasset

- 2:00 p.m.** **Viewing cancer through the prism of stem cell biology**
Jeremy Rich, UPMC Hillman Cancer Center, USA
- 2:30 p.m.** **Keeping blood vessels in shape: S1PR1 as a gatekeeper of the retinal vasculature**
Colin Naudet, CIRCI²NA, France
- 3:00 p.m.** **Dissecting the crosstalk between type I interferon responses & DNA repair pathways**
Nadine Laguette, IGMM, France
- 3:30 p.m.** **Deciphering cancer cell autonomous STING dependent tumor-promoting functions in KrasG12/Tp53ko mouse model of lung adenocarcinoma**
Chiara Ursino, IRCM, France
- 3:45 p.m.** **Coffee break with partners**
- 4:15 p.m.** **The centrosomal protein 131 participates in the regulation of mitochondrial apoptosis**
Clotilde Renaud, CIRCI²NA, France
- 4:30 p.m.** **Intravascular forces shape tumor metastasis**
Jacky Goetz, CRBS, Strasbourg, France
- 5:00 p.m.** **Poster session 2 in Hall Pharma with drinks**
- 7:00 p.m.** **Congress dinner - on registration**



FRIDAY, MARCH 22ND

Session III - Molecular basis of cancer therapeutic response and failure

8:30 a.m. **Participants welcoming**

Chairs: Latifa Rbah-Vidal & Benjamin Ory

9:00 a.m. **Cellular response to targeted radionuclide therapies**

Samantha Terry, King's College London, England  **ARRONAX**

9:30 a.m. **Ewing sarcoma, from genetics to epigenetics and immunology**

Olivier Delattre, Institut Curie, France

10:00 a.m. **Mechanisms of resistance and sensitivity to adoptive NK cell therapies in blood cancers**

Satu Mustjoki, University of Helsinki, Finland

10:30 a.m. **Agilent Cell Analysis Application workflows powering our rapidly expanding understanding of the immune system's role in cancer processes and harnessing these discoveries to drive new therapeutic developments**



Christophe lochem, Product Specialist, Cell Analysis, Agilent Technologies

10:35 a.m. **Coffee break with partners**



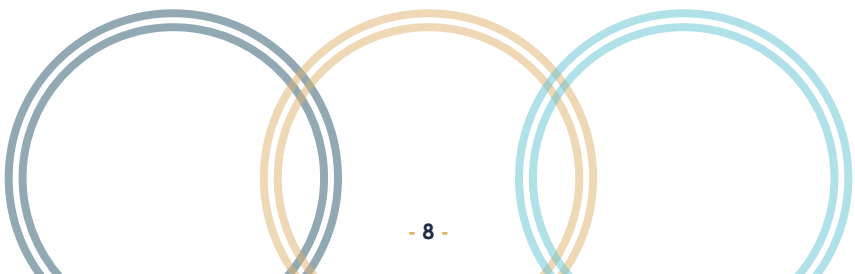


FRIDAY, MARCH 22ND

Session III - Molecular basis of cancer therapeutic response and failure

Chairs: Patricia Gomez & David Chiron

- 11:00 a.m.** **Functional genomics and transcriptomic characterization of natural killer (NK) cell response in hematologic malignancies**
Sara Gandolfi, University of Helsinki, Finland
- 11:15 a.m.** **Kv1.2 encoded by KCNA2, a new target of EWS-FLI1, modulates the YAP/Hippo signaling pathway and the proliferation of Ewing sarcoma cells**
Maryne Dupuy, CRCI²NA, France
- 11:30 a.m.** **Mechanisms of cell plasticity in breast cancer**
Céline Vallot, Institut Curie, France
- 12:00 p.m.** **Multimodal single-cell characterization of drug resistance in cancer**
Éric Letouzé, CRCI²NA, France
- 12:30 p.m.** **Poster session 3 in Hall Pharma & Lunch break with partners**





FRIDAY, MARCH 22ND

Session IV - Immunotherapy and novel anti-tumor strategies

Chairs: Katia Gagne & Jean-François Fonteneau

- 2:00 p.m.** **Engineering immune stealth to improve persistence of allogeneic cell therapy**
Karl-Johan Malmberg, *Institute for Cancer research, Oslo, Norway*
- 2:30 p.m.** **NK cell-poiesis during gut-liver axis dysregulation**
Rachel Golub, *Pasteur Institute, Paris, France*
- 3:00 p.m.** **Neospora caninum armed with a therapeutic antibody as anti-tumor strategy**
Clément Rivière, *INRAE, France*
- 3:15 p.m.** **Extracellular vesicles derived from nasopharyngeal carcinoma induce the emergence of mature regulatory dendritic cells using a galectin-9 dependent mechanism**
Camille Trioën, *Onco-Thai, France*
- 3:30 p.m.** **Integrating intrinsic anomalies and interplays with the TME to understand resistance in Lymphomas**
David Chiron, *CRCI²NA, France*
- 4:00 p.m.** **Best oral communication & Posters award**
Closing remarks



INVITED SPEAKERS

Olivier Delattre, *Institut Curie, France*

Ilaria Elia, *KU Leuven, Belgium*

Jacky Goetz, *CRBS, Strasbourg, France*

Rachel Golub, *Pasteur Institute, Paris, France*

Nadine Laguette, *IGMM, France*

Karl-Johan Malmberg, *Institute for Cancer research, Oslo, Norway*

Satu Mustjoki, *University of Helsinki, Finland*

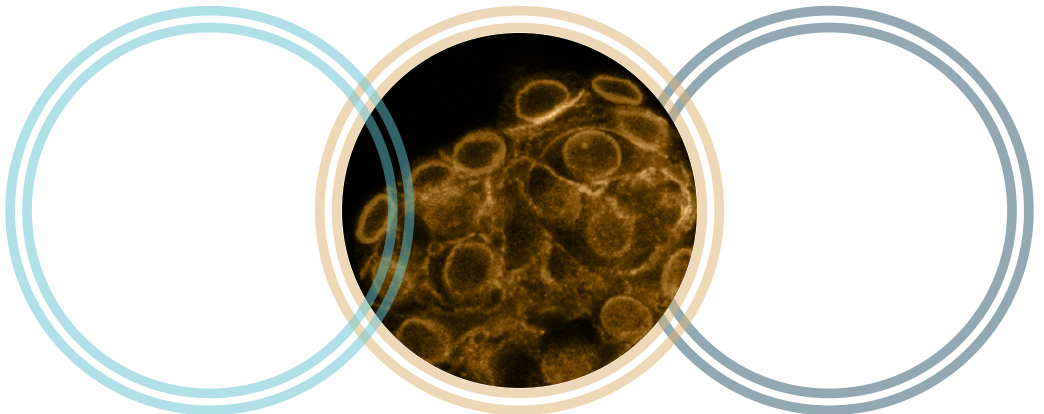
Felipe Prósper, *Universidad de Navarra, Spain*

Jeremy Rich, *UPMC Hillman Cancer Center, USA*

Samantha Terry, *King's College London, England*

Céline Vallot, *Institut Curie, France*

Robert A. Weinberg, *Whitehead Institute, MIT, USA*





CRCI²NA

CANCER & IMMUNOLOGY SYMPOSIUM

20 - 22 MARCH 2024 • NANTES

SPONSORS

INSTITUTIONAL PARTNERS



INDUSTRIAL PARTNERS



List established on March 6th, 2024



KEY DATES

Online registration until: **March 15th 2024**

REGISTRATION RATES

Online registration on www.atoutcom.com/crci2na/

REGISTRATION RATES

Regular Registration Rates <i>From January 29th 2024</i>
Academics 275€ incl. taxes
Student* / Post Doc* 165€ incl. taxes

** Upon supporting documents*

The prices are indicated tax included. If you are a society or a laboratory, please note that VAT = 10%

We invite you to visit the tab **Practical Information** on the congress website for address venue and hotel recommendations

